



MOTIF WHISPERLINES

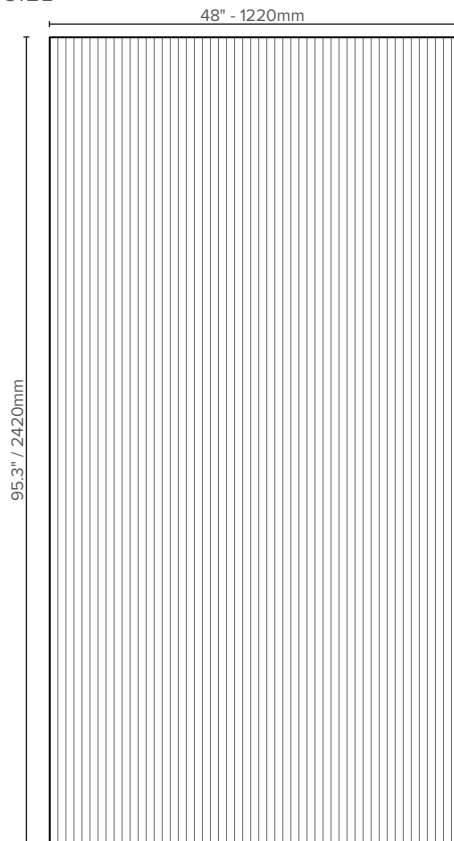
TYPE: LX-MW-

KEY FEATURES

- Highly effective noise absorption: NRC=0.85 / aw=0.85 / Class B
- Reaction to Fire: Class A / B-s1-d0
- Lightweight, durable and ecofriendly material offering easy maintenance and installation
- Compatible with our Spider Mount panel mounting system. More info on p. 4 and on the Spider Mount's dedicated spec sheet.
- GRS 4.0 Certified by Intertek
- Anti-microbial properties with high resistance to humidity, moisture & chemicals
- Custom sizes and patterns available

SIZE, PATTERN AND PROPERTIES

SIZE



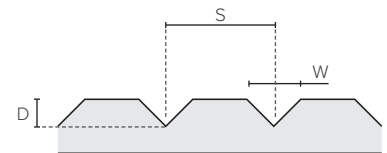
PATTERN



Similar and different cutting techniques allow for a variety of patterns. See page 5 for alternative pattern options using these techniques

V-CUT SPECS

Width (W)	0.04" / 1mm
Spacing (S)	0.2" / 5mm
Depth (D)	0.12" / 3mm



PANEL PROPERTIES

Height	95.3" / 2420mm
Width	48" / 1220mm
Thickness	0.47" / 12mm
Panel weight	11.37lbs / 5.16Kg
NRC / aw	0.85
Composition	100% polyester fiber (PET)
Reaction to Fire	Class A / B-s1-d0

Motif Panels are indoor wall coverings certified for safe use in North American and European projects. Key panel properties are summarized on the table on the left.

Please refer to page 3 for comprehensive details regarding all product certifications.

ORDER CODES

FOR ACOUSTIC PANEL

EXAMPLE: LX - MW - SA

(Luxbox Motif Whisperlines Acoustic Panel, Sand PET color)

LX - MW	
PRODUCT CODE	COLOR
MW	Use color codes as shown on pg. 2

NOTE: Products are sold individually (not as sets). Indicate the desired quantity when placing your order.

FOR SPIDER MOUNT

EXAMPLE: LX - SM - WM - 50

(Luxbox Spider Mount System, Wall Mount, Pack of 50pcs)

LX - SM				
PRODUCT CODE	COMPONENT	PACK*		
SM	WM	Wall Mount	10	Pack of 10pcs
	SO	Stackable Stand-Off	50	Pack of 50pcs
			100	Pack of 100pcs
	HT	Hole Tool	01**	Pack of 1pc

*Screws are not included. Please check the Spider Mount Spec Sheet for more information. **The Hole Tool (HT) is only available in a pack of a single piece.

Luxbox reserves the right to change the specification, material and colors at any time without notice. Standard warranty terms and conditions apply. All rights reserved © All dimensions and values on specification sheet are nominal. December 2025. LX-Motif-Whisperlines-Spec-Sheet_A4 v1.6



LUXXBOX USA INC
(P)+1 (415) 871 0448 × USA@LUXXBOX.COM
WWW.LUXXBOX.COM





MOTIF WHISPERLINES

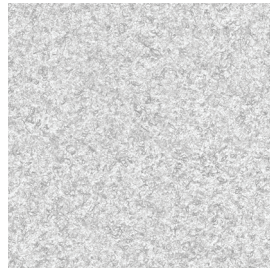
TYPE: LX-MW-

AVAILABLE COLORS

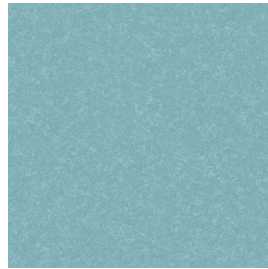
CORE



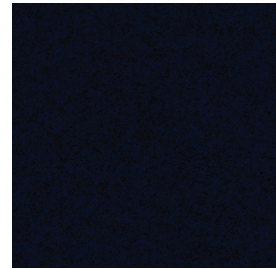
Off White
(OW)



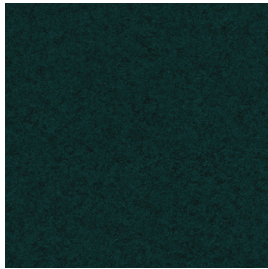
Light Grey
(LG)



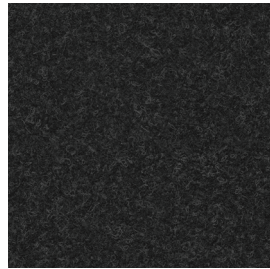
Light Blue
(LB)



Dark Blue
(DB)



Emerald Green
(EG)



Charcoal
(C)



Black
(B)

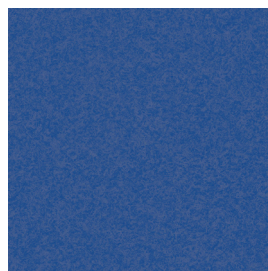
DESIGNER



Sand
(SA)



Mid Grey
(MG)



Bright Blue
(BB)



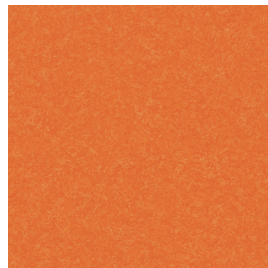
Steel Blue
(SB)



Forest Green
(FG)



Bright Yellow
(BY)



Orange
(O)



Red
(R)

Luxbox reserves the right to change the specification, material and colors at any time without notice. Standard warranty terms and conditions apply. All rights reserved © All dimensions and values on specification sheet are nominal. December 2025. LX-Motif-Whisperlines-Spec-Sheet_A4 v1.6



LUXXBOX USA INC
(P)+1 (415) 871 0448 × USA@LUXXBOX.COM
WWW.LUXXBOX.COM





MOTIF WHISPERLINES

TYPE: LX-MW-

MATERIAL SPECIFICATIONS

REACTION TO FIRE	AS/NZS 1530.3 / ISO 9705	Group 1
	GB8624	B1
	ASTM E-84-14	Class A, FSI:20 - SDI:450
	BS EN13501-1	B-s1, d0
VOC EMISSIONS:	ASTM D5116	Rate: < 0.01 mg/m ² /hr (7 days)

COLOR FASTNESS TO LIGHT:	ISO 105-B02	Rating: 6-7
ENVIRONMENTAL:	GRS 4.0	Certified by Intertek
THERMAL TRANSITION:	ASTM C518-2010	R- Value = 0.30 m ² K/W
SOUND ABSORPTION:	ISO 354	NRC= 0.85

PRODUCT ACOUSTIC PROPERTIES

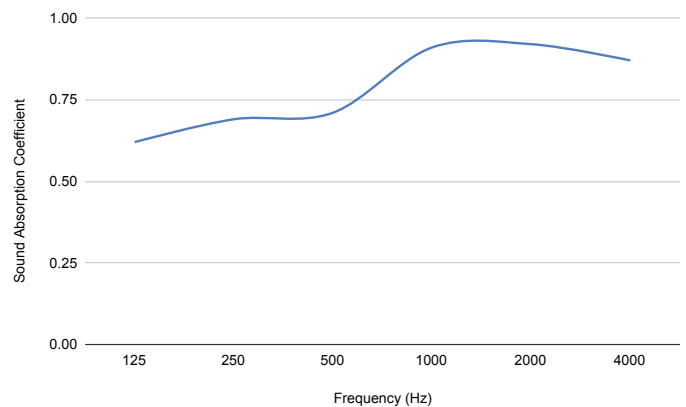
STANDARDS

Testing and post analysis procedures were carried out in accordance with the references detailed below:

ISO 354:2003	Acoustics - Measurement of sound absorption in a reverberation room
ISO 11654:1997	Acoustics - Sound absorbers for use in buildings — Rating of sound absorption
ASTM C423-22	Standard Test Method for Sound Absorption and Sound Absorption Coefficients by the Reverberation Room Method
ASTM E795-16	Standard Practices for Mounting Test Specimens During Sound Absorption Tests

ACOUSTIC PERFORMANCE

Frequency (Hz)	Sound Absorption Coefficient
125	0.69
250	0.92
500	0.96
1000	0.76
2000	0.79
4000	0.74



Noise reduction Coefficient (NRC)	0.85
Sound Absorption Average (SAA)	0.83
Weighted Sound Absorption Coefficient (aw)	0.85
Absorption Class	Class B

Please note that the acoustic performance of our Motif Panels could be significantly improved by adding an air gap between the acoustic panel and the wall.

ACOUSTIC PERFORMANCE METRICS EXPLAINED

Noise Reduction Coefficient (NRC): The NRC is a single-number rating that indicates how much sound a material absorbs. An NRC of 0.85 means the material absorbs 85% of incident sound and reflects 15%.

Sound Absorption Average (SAA): The SAA is a more detailed version of the NRC, calculated as the average absorption across twelve one-third octave bands from 200 Hz to 2500 Hz. This provides a finer-grained insight into how the material performs across speech-relevant frequencies.

Weighted Sound Absorption Coefficient (aw): aw is a European single-number rating that condenses a material's sound absorption performance into a value between 0 and 1, based on standardized laboratory testing (ISO 11654). It is weighted to match human auditory sensitivity, making it highly relevant in architectural design.

Absorption Class: Derived from aw, the Absorption Class (A–E) categorizes materials into intuitive performance bands, with Class A representing the highest sound absorption. This makes it easier for designers and clients to compare materials without reading full test reports.

Frequency-Dependent Absorption Coefficients: These values show how much sound is absorbed at specific frequencies—typically at 125, 250, 500, 1000, 2000, and 4000 Hz. They are critical for specialists aiming to target particular acoustic issues, such as controlling low-frequency rumble or high-frequency reverberation.

Luxxbox reserves the right to change the specification, material and colors at any time without notice. Standard warranty terms and conditions apply. All rights reserved © All dimensions and values on specification sheet are nominal. December 2025. LX-Motif-Whisperlines-Spec-Sheet_A4 v1.6



LUXXBOX USA INC
(P)+1 (415) 871 0448 × USA@LUXXBOX.COM
WWW.LUXXBOX.COM





MOTIF WHISPERLINES

TYPE: LX-MW-

INSTALLATION OVERVIEW

INSTALLATION INSTRUCTIONS & CARE MANUAL

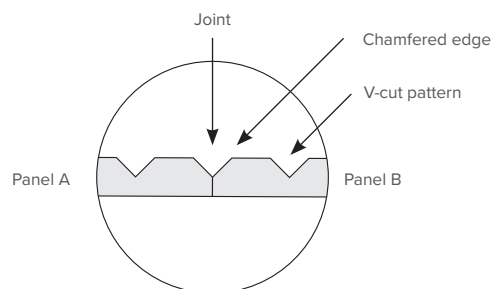
Our Motif Panels are easy to install, extremely durable and require little attention to maintain their good looks. A proper installation and light cleaning on a regular basis, will maintain their appearance and prolong the life of the material.

Please refer to our Installation Instructions and Care Manual documents on the product's webpage for more information about how to install and maintain your Motif Acoustic Panels.

SEAMLESS PATTERNS

Our textured panels use seamless patterns achieved through v-cuts, also used to chamfer edges so they integrate into the full wall pattern. Please see the diagram on the right for reference.

The non-woven material prevents pattern repetition, but slight variations may occur between samples and batches.



ON SITE ADJUSTMENTS

These panels are designed for easy on-site modification. Their width and height can be adjusted during installation using common tools in the industry. Refer to the On-Site Modifications section of our Installation Instructions for guidelines on working with this material.

Custom panel sizes are also available directly from the factory. Contact your sales agent for more information.

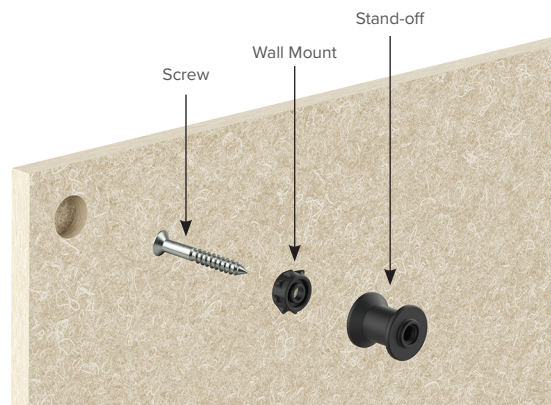
SPIDER MOUNT

We recommend the patent-pending Spider Mount panel mounting system for a streamlined, highly efficient installation. This versatile system is compatible with various panel sizes and materials and allows for easy on-site adjustments.

Key Features and Benefits:

- Optimized Acoustics and Flexibility: The stackable stand-off allows for custom air gap adjustment, optimizing acoustic performance, easily concealing cables, and compensating for uneven walls.
- Easy Cable Management: Off-wall spacing provides easy, repeated access to hidden cabling without damaging the wall treatment.
- Reusable and Reconfigurable: The quick-connection mount can be easily disassembled and reused, ideal for reconfiguring spaces or relocating.

Alternatively, Motif panels can be mounted using standard methods like construction adhesive or double-sided tape. Consult our extended installation instructions for more details.



LAYOUT IDEAS

Standard Layout

A	A	A
A	A	A

- Single color
- Butt joints between adjacent panels
- Can be extended in height and width

Multi-color Layout

A	A	A
B	B	B

- Combination of multiple PET colors.
- Panels can be cut at different heights
- Butt joints between adjacent panels
- Can be extended in height and width

Luxbox reserves the right to change the specification, material and colors at any time without notice. Standard warranty terms and conditions apply. All rights reserved © All dimensions and values on specification sheet are nominal. December 2025. LX-Motif-Whisperlines-Spec-Sheet_A4 v1.6



LUXBOX USA INC
(P)+1 (415) 871 0448 × USA@LUXBOX.COM
WWW.LUXBOX.COM





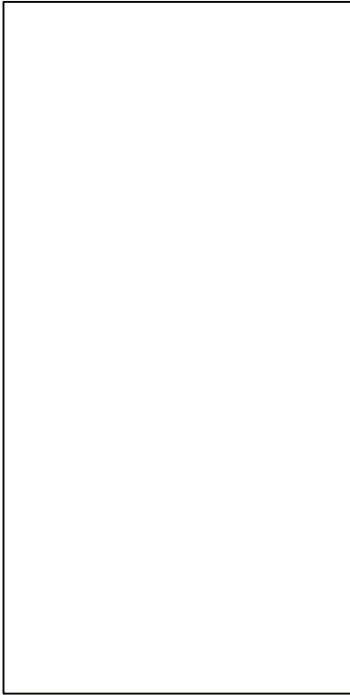
MOTIF WHISPERLINES

TYPE: LX-MW-

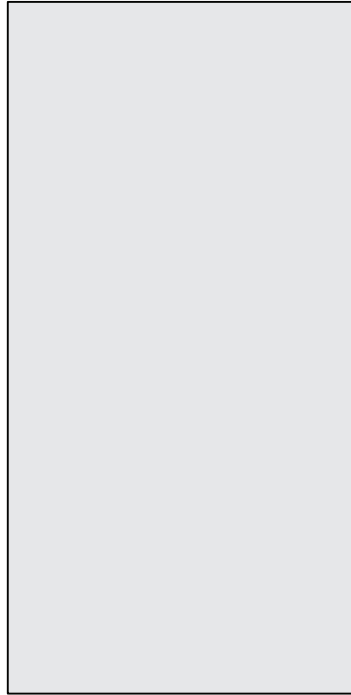
OTHER AVAILABLE PATTERNS

Please see other pattern options below. More detailed information on each product range can be found on our website.

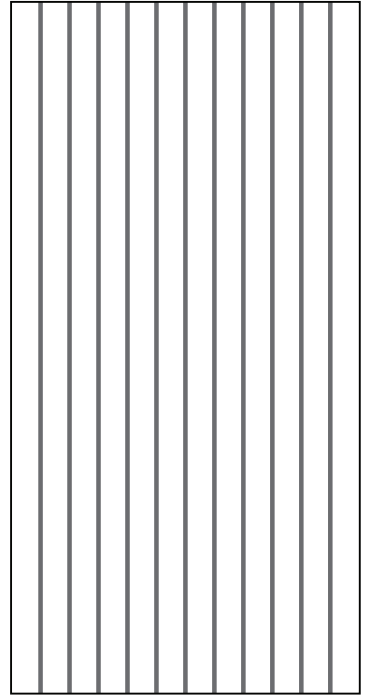
MOTIF BASICA



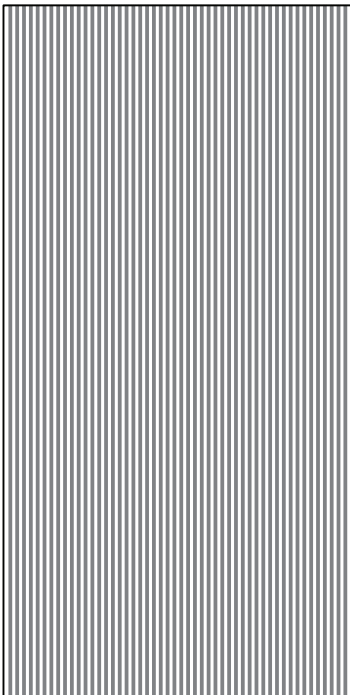
MOTIF VEIL



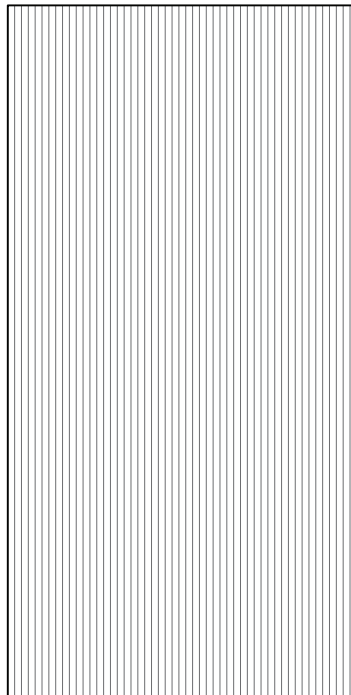
MOTIF SHIPLAP



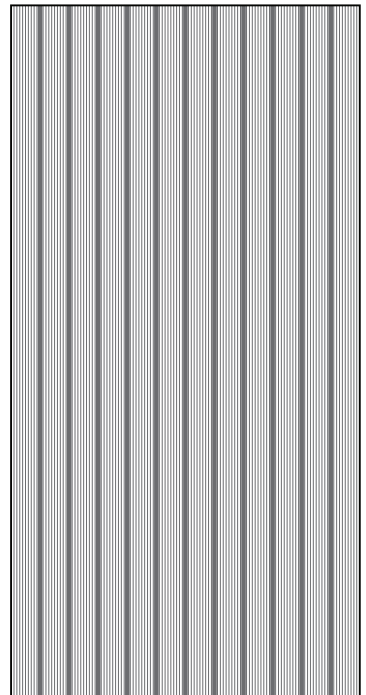
MOTIF RANURA



MOTIF WHISPERLINES



MOTIF PULSE



Luxxbox reserves the right to change the specification, material and colors at any time without notice. Standard warranty terms and conditions apply. All rights reserved © All dimensions and values on specification sheet are nominal. December 2025. LX-Motif-Whisperlines-Spec-Sheet_A4 v1.6



LUXXBOX USA INC
(P)+1 (415) 871 0448 × USA@LUXXBOX.COM
WWW.LUXXBOX.COM

