



SPIDER MOUNT (LX-SM)

TYPE: LX-SM-



KEY FEATURES

- Its unique one-part design makes installations fast and highly efficient.
- Modular Stand-off system for enhanced acoustics and uneven walls.
- Fully circular and reusable.
- Provides easy access to the wall behind for maintenance and cable management.
- Patent Pending

OPTIONAL EXTRAS

- Additional options available upon request:
- Custom mount sizes
 - Custom Stand-off lengths
 - BABA Act Certificate

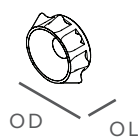
COMPONENTS AND DIMENSIONS

BASIC DIMENSIONS

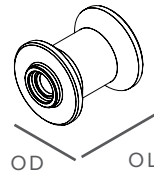
	LX-SM-WM		LX-SM-SO		LX-SM-HT	
	OD	OL	OD	OL	OD	OL
mm	21	8	24	26.8	43	145
in	0.83	0.31	0.94	1.05	1.69	5.7

OD: Overall Diameter

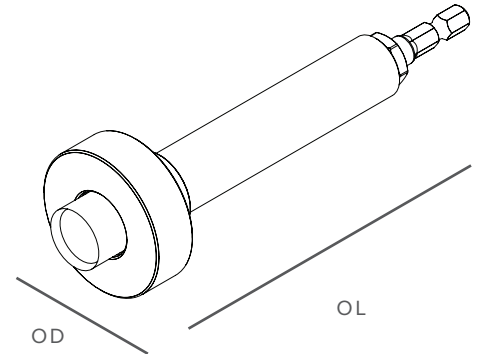
OL: Overall Length



WALL MOUNT (LX-SM-WM)



STACKABLE STAND-OFF (LX-SM-SO)



HOLE TOOL (LX-SM-HT)

SPECIFICATIONS

COMPOSITION

All proprietary system components are made from 100% recycled and recyclable PETG, providing the ideal characteristics for secure and reliable wall panel mounting.

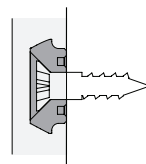
Please see key material specs on the table below:

Composition	100% recycled PET
Density	1.27-1.29g/cm ³ /
Tensile Strength (Yield)	40-50 MPa
Heat Deflection Temperature (@ 0.45 MPa)	68-76°C / 154.4-168.8°F
Glass Transition Temperature (T _g)	77-81°C / 170.6-177.8°F
Water Absorption	≤0.2 %
Recycling Code	#1
Reaction to Fire	Class A / B-s1-d0

STACKABLE STAND-OFF SYSTEM

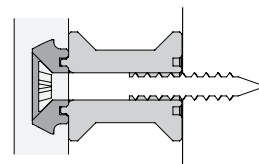
The modular stand-off system is designed for stackability, allowing you to create any required air gap, each stand-off adds **25mm / 1"**. This gap effectively optimizes acoustic performance and provides crucial repeatable access for cable management behind the panel. The stand-offs quickly attach to the Wall Mount and secure with a single countersunk screw.

NO STAND-OFF



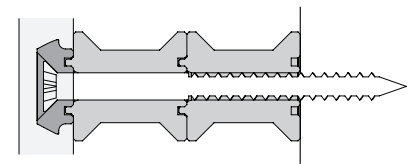
No air gap

1x STAND-OFF



25mm / 1" air gap

2x STAND-OFFS



50mm / 2" air gap

SCREWS

Appropriate countersunk screws are not included. Please note the diameter of the holes on the Wall Mount (MD) and the Stand-Off (SD) are both **0.24" / 6mm**



ORDER CODE

EXAMPLE: LX - SM - WM - 50

(Luxbox Spider Mount System, Wall Mount, Pack of 50pcs)

LX - SM		PACK*	
PRODUCT CODE	COMPONENT	PACK*	
SM	WM	10	Pack of 10pcs
	SO	50	Pack of 50pcs
		100	Pack of 100pcs
	HT	01**	Pack of 1pc

*Screws are not included. Please check guidelines on quantities on the next page. | **The Hole Tool (HT) is only available in a pack of a single piece.

Luxbox reserves the right to change the specification, material and colors at any time without notice. Standard warranty terms and conditions apply. All rights reserved © All dimensions and values on specification sheet are nominal. December 2025. LX-Spider-Mount-Spec-Sheet_A4 v1.3



LUXXBOX USA INC
(P)+1 (415) 871 0448 × USA@LUXXBOX.COM
WWW.LUXXBOX.COM





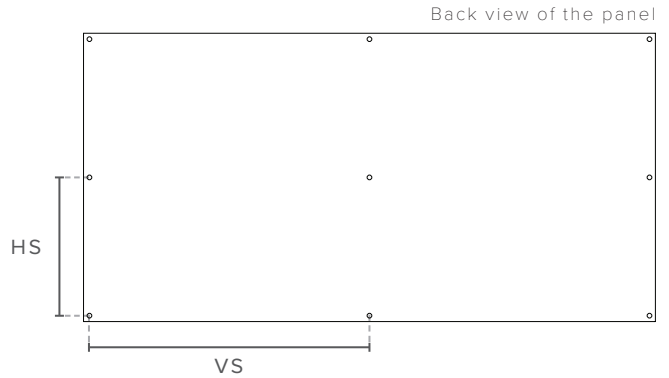
SPIDER MOUNT (LX-SM)

TYPE: LX-SM-

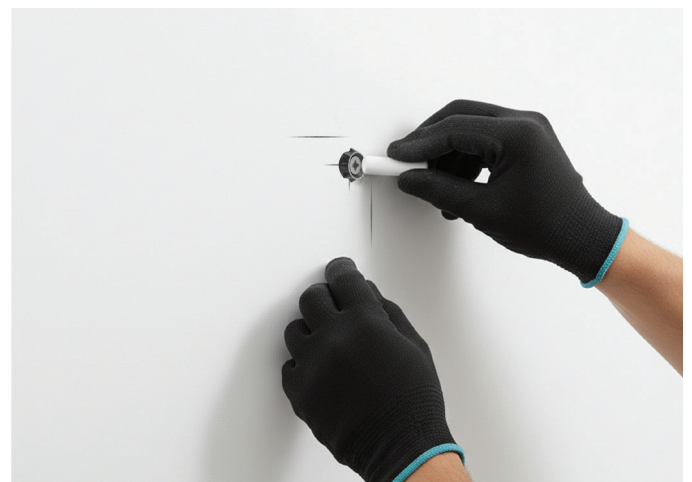
INSTALLATION OVERVIEW

For standard Acoustic PET panels of 94.5" x 47.2"/2400x1200mm, we recommend a total amount of 9 fixing points. For an optimal installation, we recommend not to exceed the spacing between mounts shown on the diagram on the right.

	mm	in
HS	585	23
VS	1185	45.6



1. Measure and lay out your panels on the wall surface. Evenly mark the location of the mounts based on our guidelines and fix them to the wall. Use Stand-offs if desired by clipping them to the back of the mount before fixing them to the wall.



2. Mark the top surface of the mounts with a marking substance like chalk, ink, paint or lead. Place the panel in the desired position and gently press it against the wall to transfer the marks for precise hole locations.



3. Use the supplied tool with a standard electric screwdriver to drill blind holes at the marked locations. Use needle-nose pliers to tear out the core of the hole.



4. Press the panel firmly against the wall to secure the mounts into the holes. Please note that applying a pull force at the edge of the panel easily removes it from the mounts, to remount simply press it again.

Luxxbox reserves the right to change the specification, material and colors at any time without notice. Standard warranty terms and conditions apply. All rights reserved © All dimensions and values on specification sheet are nominal. December 2025. LX-Spider-Mount-Spec-Sheet_A4 v1.3



LUXXBOX USA INC
(P)+1 (415) 871 0448 × USA@LUXXBOX.COM
WWW.LUXXBOX.COM

